



Full Silver PowerSeal Continuous Duty



Description

The PowerSeal is a sealed DC Contactor that gives you a high performing product at a very competitive price. The PowerSeal unit is available in 12V, 24V, 36V, and 48V coils.

Features:

- SPST DC Contactor
- Patented Product Design
- IP66 and IP67 Rated
- Choice of 12V, 24V, 36V, and 48V coil operation
- Choice of various mounting bracket options

Applications:

- Hydraulic Power Pack
- Electric Vehicles (Golf Carts, Pallet, Jacks, Forklifts)

Specifications

Mechanical Parameters

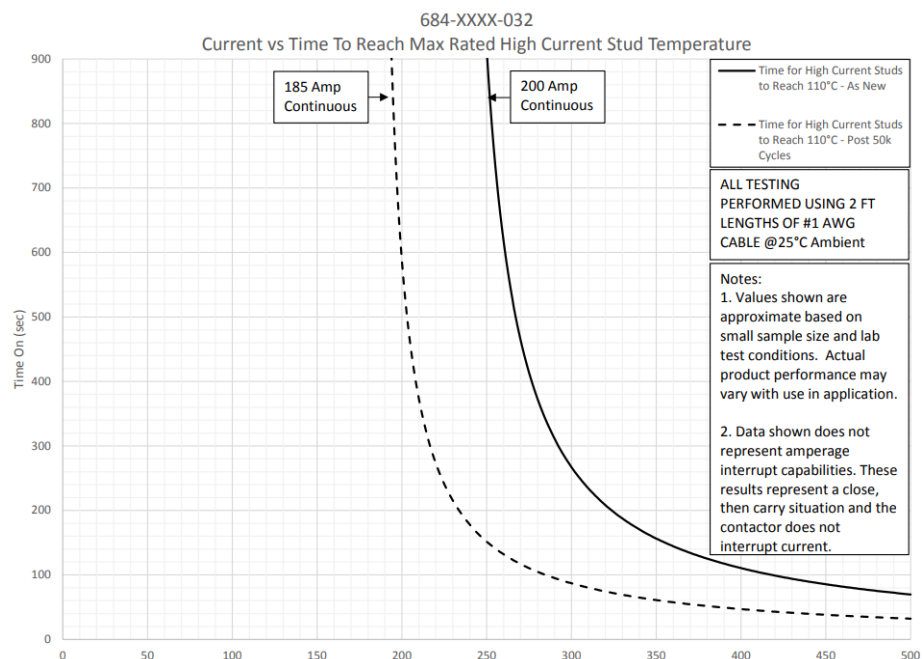
Coil Terminals	10-32 Studs
Contact Studs	5/16-24 Studs
Mounting Bracket	Various Options Available

Environmental Parameters

Operating Temperature Range	-40°C to 65°C
Sealing	IP66 and IP67

Electrical Parameters @ 25°C

Coils	12V	24V	36V	48V
Max Sustained Duty Cycle	100%	100%	100%	100%
Max On-Time	Continuous			
Pull- In Voltage (VDC)	9	18	27	36
Hold Voltage (VDC)	4.5	9	13.5	18
Coil Resistance (Ohms)	13.5	48	105	192
Contacts				
Inductive Load Carry/Interrupt (Amps)	200/300	200/300	200/225	200/225
Peak Inductive In-Rush Capability (Amps)	1,000	1,000	600	600
Electrical Cycle Life	50,000	50,000	50,000	50,000
Contact Material	Copper w/ Silver alloy contact buttons			



811 N. 87th St, Milwaukee, WI 53224
P: 414-410-0300 F: 414-355-3882
e-mail: sales@trombetta.com



TROMBETTA
A SUBSIDIARY OF STANDARD MOTOR PRODUCTS, INC.

SMPENGINEEREDSOLUTIONS.COM



Full Silver PowerSeal Continuous Duty

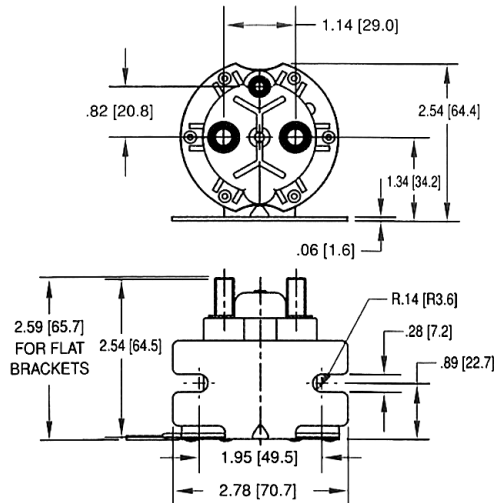
Ordering Information

Enter Part Number Below- We are able to customize orders. Some configurations are not available. Contact your Trombetta Sales Rep before ordering.

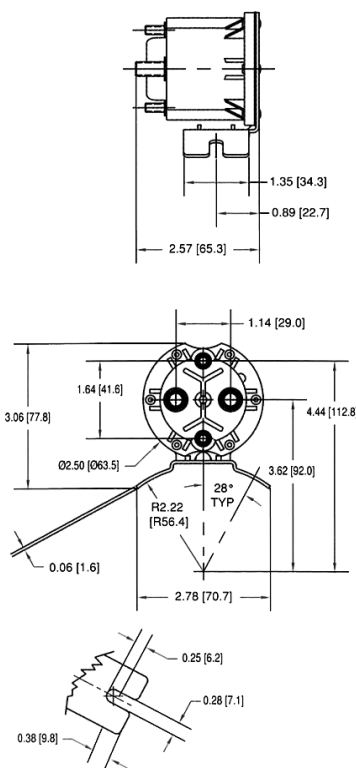
Family	Coil Connection Configuration	High Current Stud	Coil Voltage	Bracket Type	Bracket Location	Duty Cycle	Contact Material	Sealing
<input type="checkbox"/>	<input type="checkbox"/>	<input type="checkbox"/>	<input type="checkbox"/>	<input type="checkbox"/>	<input type="checkbox"/>	<input type="checkbox"/>	<input type="checkbox"/>	<input type="checkbox"/>
6 - Power Seal	3 - Grounded 10/32 8 - Non-Grounded (2) 10/32	4 - Standard Power Seal	12 - 12 Volt 24 - 24 Volt 36 - 36 Volt 48 - 48 Volt	1 - L Bracket, Curved 2 - Flat Bracket 3 - Curve Bracket 4 - 90 Degree Bracket 5 - L Bracket, Flat 6 - L Bracket, Curved Narrow 7 - L Bracket Flat Long	1 - Standard	0 - 100% Continuous	3 - Copper w/ Silver alloy contact buttons	2 - Sealed Design

Note: For additional best practices and application details contact SMP-Trombetta or reference our application guide

L Flat Bracket

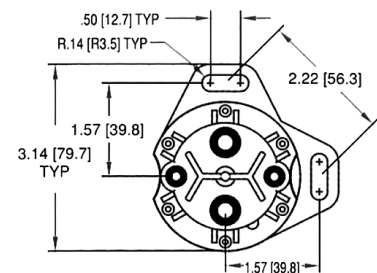


L Bracket



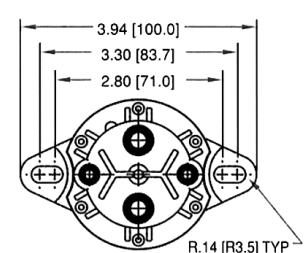
90° Bracket

Refer to L Bracket configuration for additional dimensions.



Flat Bracket

Refer to L Bracket configuration for additional dimensions.



811 N. 87th St, Milwaukee, WI 53224
P: 414-410-0300 F: 414-355-3882
e-mail: sales@trombetta.com



TROMBETTA
A SUBSIDIARY OF STANBARD MOTOR PRODUCTS, INC.

SMPENGINEEREDSOLUTIONS.COM